



Powered by Aucxis

**KOSMOS 24.1**

## **RELEASE NOTES**

**OUR TECHNOLOGY  
YOUR FUTURE**

**Aucxis bv**

Zavelstraat 40  
9190 Stekene, Belgium  
T +32 (0)3 790 17 17  
BE 0429.285.178

[info@aucxis.com](mailto:info@aucxis.com)  
[www.aucxis.com](http://www.aucxis.com)

Date: 17/10/2024  
Version: 1.0

## Index

---

<b>1</b>	<b>INTRODUCTION .....</b>	<b>3</b>
<b>2</b>	<b>GENERAL OVERVIEW OF KOSMOS 24.1 IMPROVEMENTS .....</b>	<b>3</b>
<b>3</b>	<b>SUPPLY EXPECTATION FOR SUPPLIERS.....</b>	<b>3</b>
<b>4</b>	<b>MICROPHONE DETECTION .....</b>	<b>4</b>
<b>5</b>	<b>GENERAL PRODUCT IMPROVEMENTS .....</b>	<b>6</b>
5.1	SELECT LOT POPUP .....	6
5.2	VALIDATION WIDGET .....	8
5.3	KOSMOS LOGGING.....	8
<b>6</b>	<b>KOSMOS 24.2.....</b>	<b>8</b>

## 1 Introduction

---

Dear customer,

Through this document we would like to inform you about the modifications and improvements in our KOSMOS release 24.1. For more details or specific information about a certain feature, please do not hesitate to contact the KOSMOS team in order to receive detailed functional documentation.

In 2024 we have started to create smaller KOSMOS versions with less new functionality in order to accelerate the development and delivery process. This approach allows us to update our customers more easily and gives you the flexibility to use or skip a version based on the new functionality. While we previously released 2 major updates per year, we will now perform at least one update to the newest KOSMOS version once a year.

## 2 General overview of KOSMOS 24.1 improvements

---

In this new version, we have added two new features:

- Supply expectation for suppliers
- Microphone detection mechanism

In addition to these new features, we have also made general improvements and performance updates to ensure the KOSMOS product remains stable and reliable.

Please check our release notes below for more details about this new KOSMOS version.

## 3 Supply expectation for suppliers

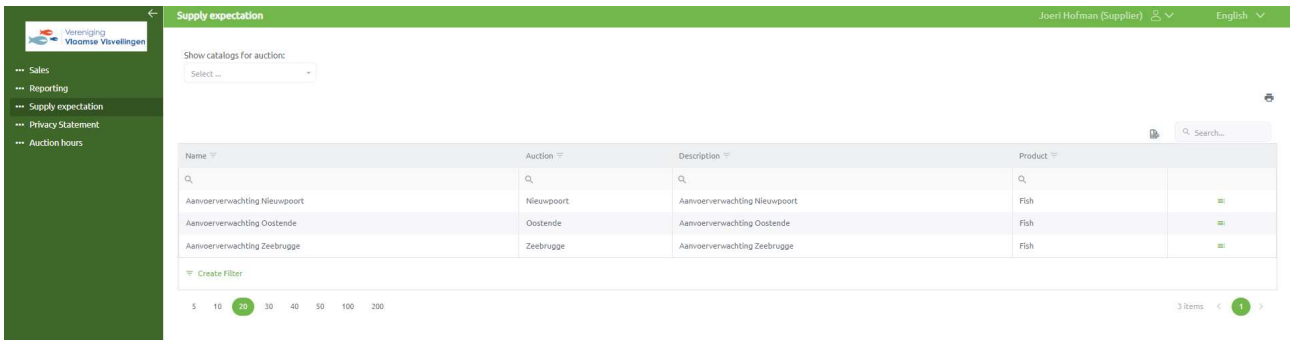
---

KOSMOS already supports a “Supply expectation” module, which is commonly used by our Fish Auctions. However, one limitation of this module is that all information (supply) needs to be entered or provided by the auction itself.

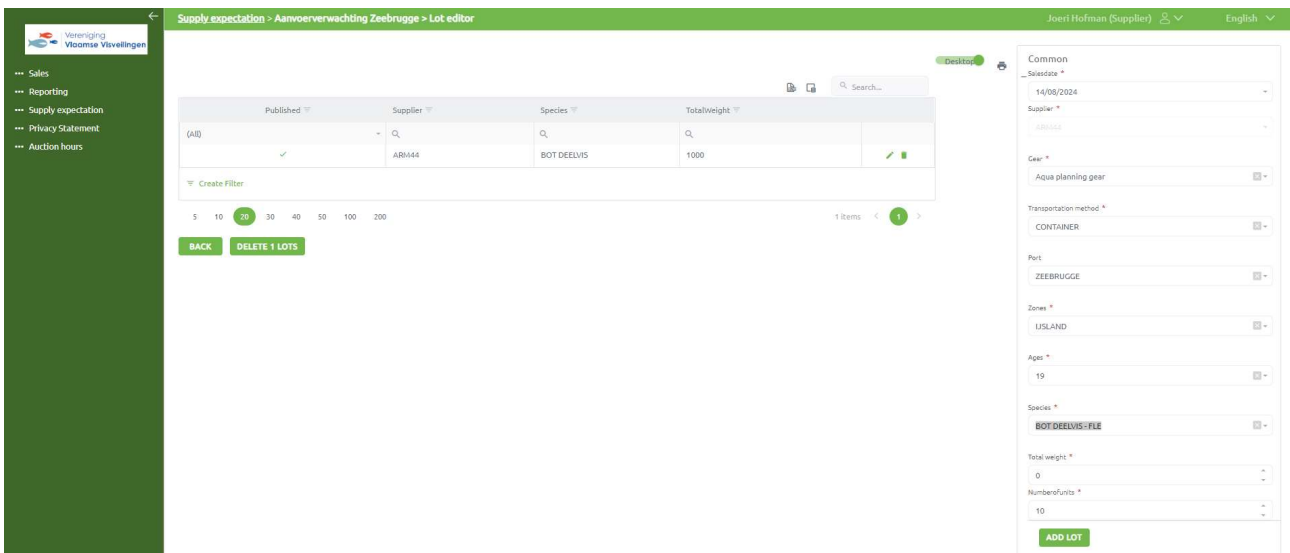
In KOSMOS 24.1, it is now possible to grant suppliers access to enter their supply expectations directly into KOSMOS. These expectations will be automatically published and visible to the auction staff and their buyers. While the auction can always perform a check if needed, this is not required. This allows supply expectations to be entered directly by suppliers, making them available to buyers more quickly, without needing auction staff intervention.

The supply expectation editor works the same for suppliers as it does for auction staff. However, suppliers will be restricted of course to managing only their own supply. Whether the desktop or touch mode version of the editor is used will depend on the configuration, as both editors are available.

Below you will find an example of the supply expectation module activated for suppliers. Suppliers will see an additional “Supply expectation” item in their menu. By opening this module, they will see the available supply catalogues to enter their supply.



After selecting the catalogue, supply can be entered by using the lot editor. The screenshot below shows an example of a possible supply expectation lot editor. On the left, the entered supply is displayed, and on the right, the configured lot editor is available. Both the grid/overview of the entered supply and the lot editor are configurable and can be customised to meet the needs of the auction. The auction staff and the suppliers will use the same configuration, as different configurations for suppliers and auction staff are not possible.



Supply expectation entered by suppliers will be published automatically, without the need for manual publishing by the auction. However, the auction can still make modifications to the supply expectation when needed. For a detailed description of this feature, please ask for the functional analysis.

## 4 Microphone detection

In KOSMOS there are various ways to buy and send the required amount to the auctioneer. Buying can be done by using the buy popup, buy amount numbers, audio, prebids...

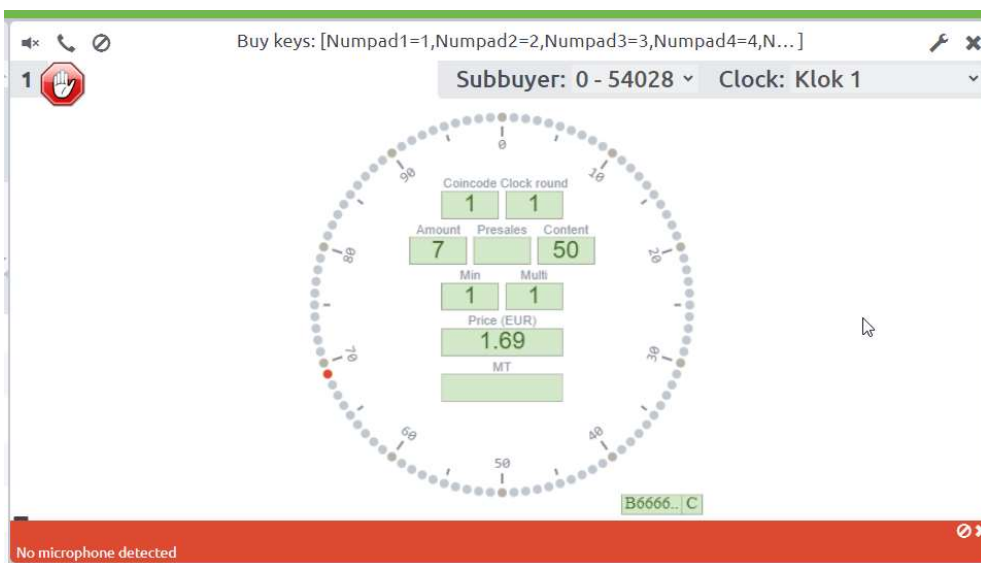
When auctions use audio for purchasing, they depend on the buyer's hardware equipment (computer, headset). Buyers are responsible for ensuring they have a good microphone/headset. In order to prevent buyers from purchasing via audio without a connected headset/microphone, KOSMOS has been extended with a microphone detection.

Buying via audio depends on the following configuration.

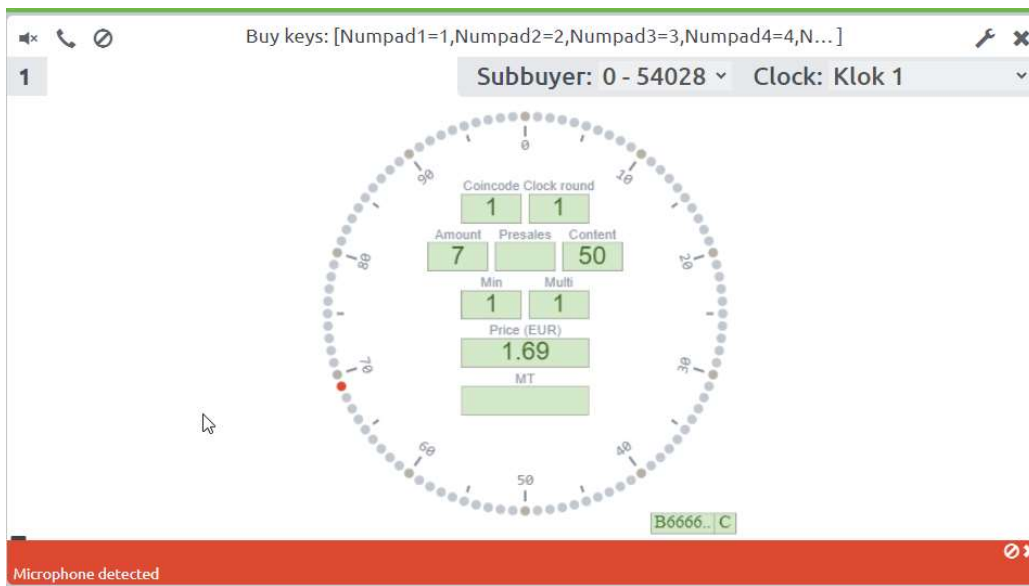


If audio is activated but no microphone is detected, the buyer will receive a warning (“No microphone detected”) and will not be able to make a bid. This avoids buyers from stopping the clock without being able to talk with the auctioneer. Such situations can delay the auction and cause confusion.

When no microphone is detected, buyers will see the following message (see screenshot below). They will also see the “red hand” icon, indicating that buying is not possible.



After connecting a microphone, the message is updated and the buyer will be able to make a bid.



When audio is not activated, the microphone detection check is disabled and will not be executed.

If the auction decides to allow buyers to buy without using audio, then the buy amount buttons, or the buy popup needs to be activated for them.

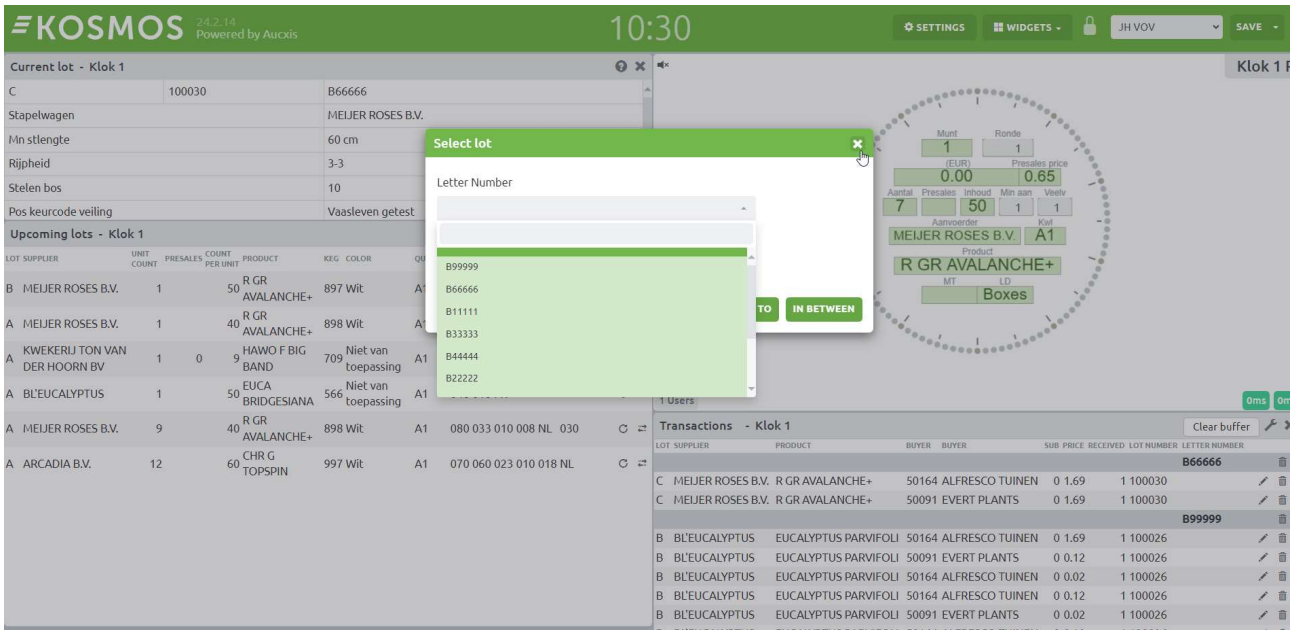
## 5 General Product improvements

### 5.1 Select lot popup

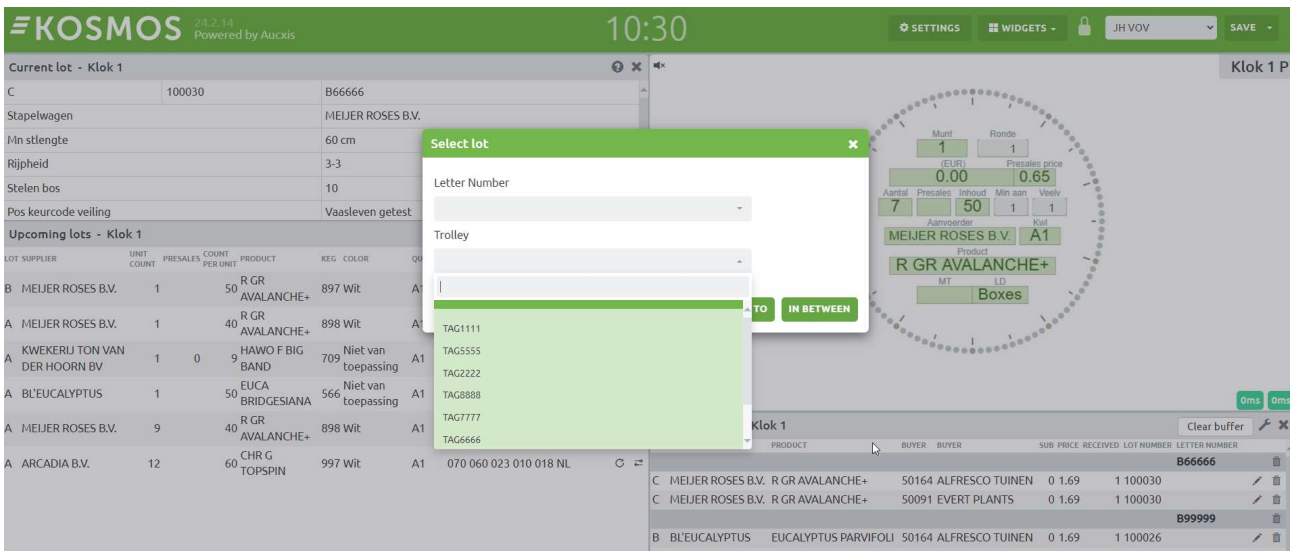
One of the many improvements is the possibility to assign individual short keys to all available fields in the **Select lot popup**. Auctions which can use multiple fields for selecting a lot can now use the corresponding short key to choose the appropriate field in the popup.

In the example below you will see a "Select lot" popup which is configured with 2 fields: "Letter number" and "Trolley". The popup can now be used with these two fields in order to select a lot.

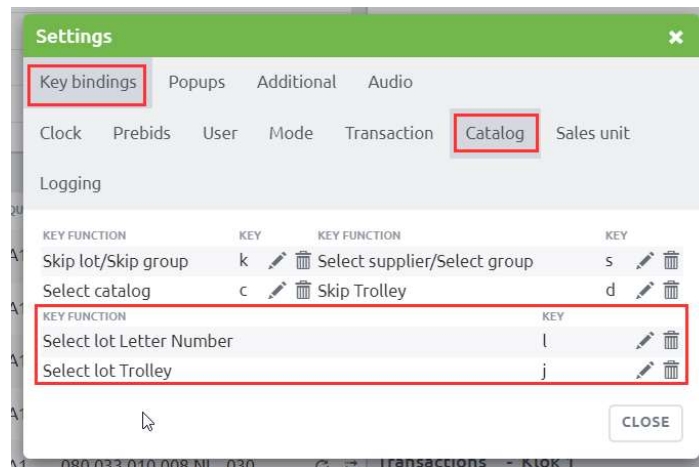
## Select a lot based on "Letter number"



## Select a lot based on "Trolley"



In the settings menu of the auctioneer application, the auctioneer can assign the required shortcuts for using the Select lot popup. Depending on the configuration, a function key can be defined for each field.



## 5.2 Validation widget

The validation widget now supports a short key for cancelling and closing the validation widget/popup.

## 5.3 KOSMOS logging

The current logging has been extended with additional information to know the origin of each individual transaction. It is now possible (including for use in reports) to identify how a transaction was made: whether it was through a normal bid, a prebid, or if it was created by a presales and/or buyback. This information will give us/the auction more details about the transactions.

## 6 KOSMOS 24.2

Our future KOSMOS version, **KOSMOS 24.2** will primarily be extended with a **Multi-transaction** feature. Apart from some general product improvements, multi-transaction will be the only feature which will be added to KOSMOS. Multi-transaction is a well-known and widely used feature in flower auctions. It speeds up the auction process by allowing multiple transactions to be created at the same time, at the same price for multiple buyers. This feature will be available to all customers using a falling clock. More details about our multi-transaction feature can always be requested, and we can share our functional description when needed.